

SASCo. Potentiometer

Throttle Position Sensor

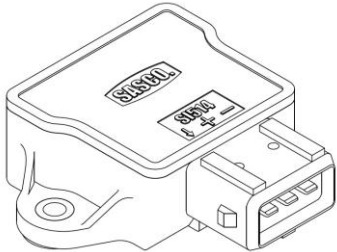
SI-514 Series (Pride Siemens type)

SI-514 Series

Typical Application: Throttle & Pedal Position

Features / Benefits:

- Sealed, Spring Return Rotor
- Non-Adjustable Mounting
- Clockwise Rotation (Below view)
- Mates with 3 Way "Mini-Timer" Style Connector
- Gold plated terminals
- Applicable on IRCA, Sookht Ama and Sazeh Pooyesh throttle bodies
- According to MEGA Motor request



TYPICAL SPECIFICATIONS

ELECTRICAL

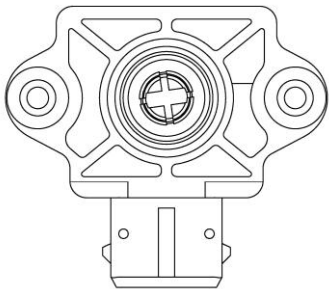
Total Resistance(Terminal 1-2):	2.0 K Ω \pm 20%
Wiper protection resistance (Wiper in zero-position, terminals 1-3):	1.0 K Ω \pm 20%
Linearity:	< \pm 1% (independent)
Usable Electrical Angle Area:	107.8 $^{\circ}$
Angle Between Internal Stops:	110 $^{\circ}$
Output Slope:	0.00927 (% / deg) = 46.35 mV / deg
Idle Voltage:	500 \pm 200 mV
W.O.T Voltage:	4440 (+260 mV,-460 mV)
Hysteresis:	< 0.5 % Applied Voltage
Electrical Limit:	16 VDC Maximum
Operation voltage:	5 V
Maximum Power Rating:	0.08 Watts

MECHANICAL

Right Stop Position:	0 $^{\circ}$
Left Stop Position:	110 $^{\circ}$
Torque:	Start of Rotation, >0.015 Nm End of Rotation, <0.12 Nm
Stop Strength:	0.8 N
Air Passage Leak	No leak in air pressure= 2 bar

DURABILITY

Mechanical Cycling:	1.0 \times 10 ⁶ Full Strokes 0.5 \times 10 ⁶ Half Cycles 5.0 \times 10 ⁶ Dither Strokes
Standard Vibration:	24 hrs; 3 Planes 10 to 250 Hz; 1.36 – 32 g, 0 $^{\circ}$ to 80 $^{\circ}$ C
Thermal Shock:	100 Cycles, -40 $^{\circ}$ to 135 $^{\circ}$ C



Temperature Range
Operating: -40° to 120°C
Storage: -40° to 130°C

ENVIRONMENTAL

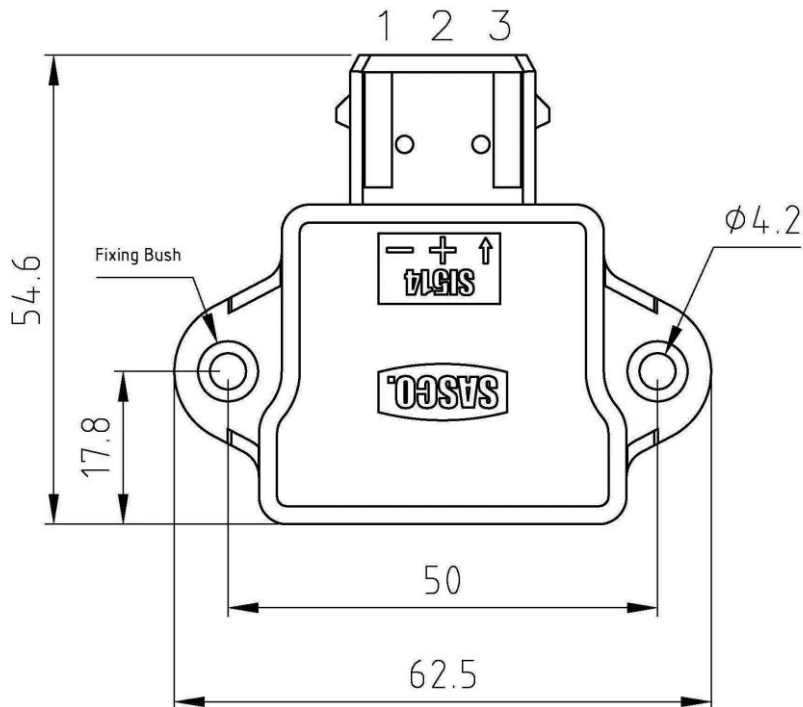
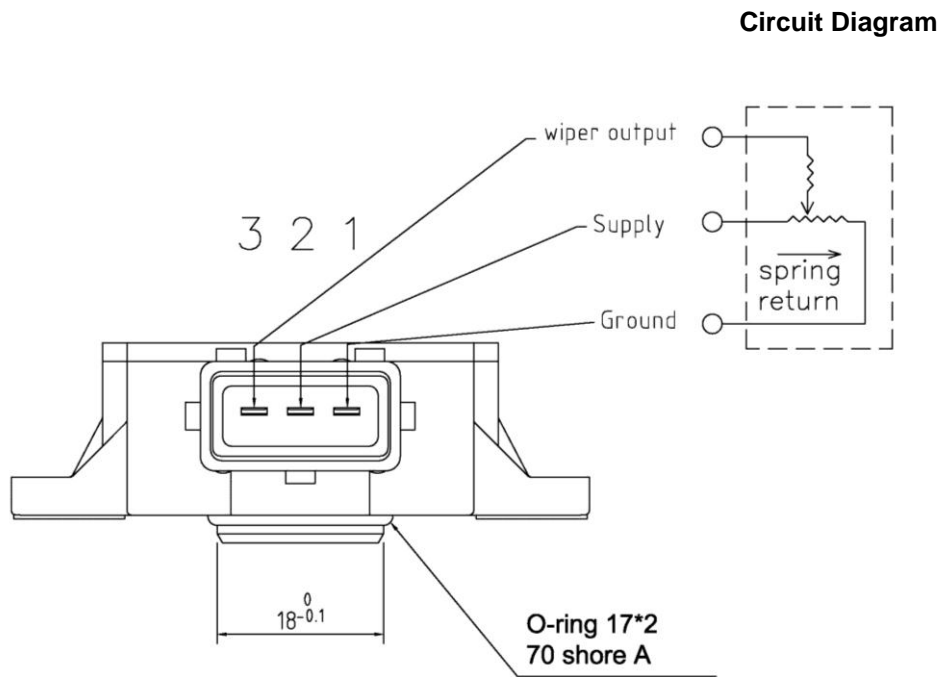
Salt Spray: 250 hrs.
Humidity: 96 hrs., 93% RH at 40°C
Resistant to gasoline, engine oil, brae fluid & antifreeze

NOTE: These standard specifications have been met on existing production-tooled units that are tested on precise test equipment. Details are available including failure criteria. This data sheet does not constitute a warranty that the product will meet the above specifications while used in your application or attached to your test equipment.

SI-514 Series

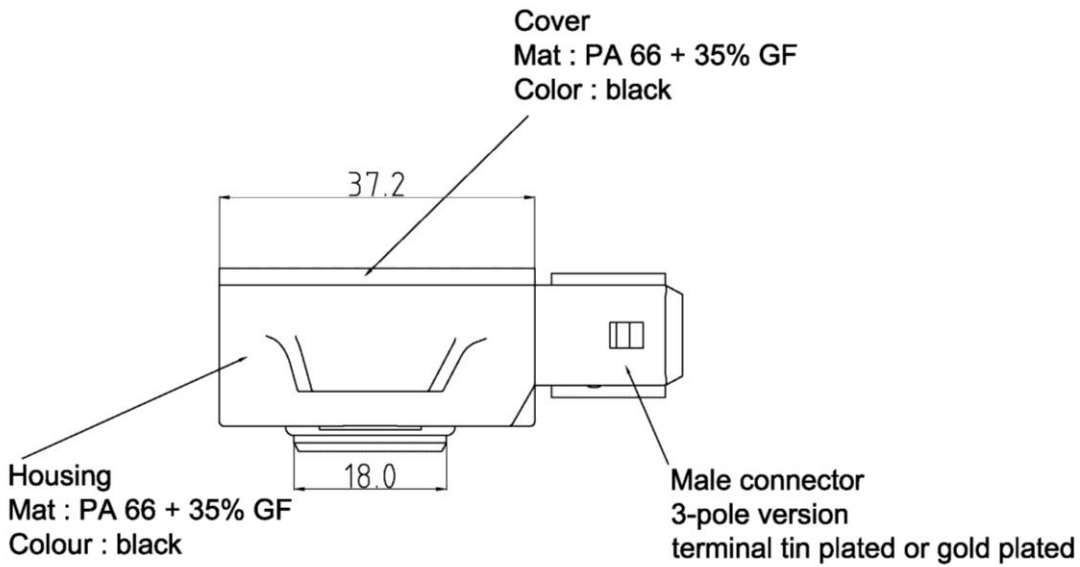
HEADQUARTER
Shirashian sanat co.
No.419, 10th St., 1st Blvd.,
Buali industrial estate
6518114334 Hamedan,
Iran
Tel/Fax: 0098 8114383212-13
Website:www.shirashianco.com
Email:info@shirashianco.com
Date: 04/23/2002
Revised: 12/20/2012
Version: 1. 5

Dimensional Details (mm)



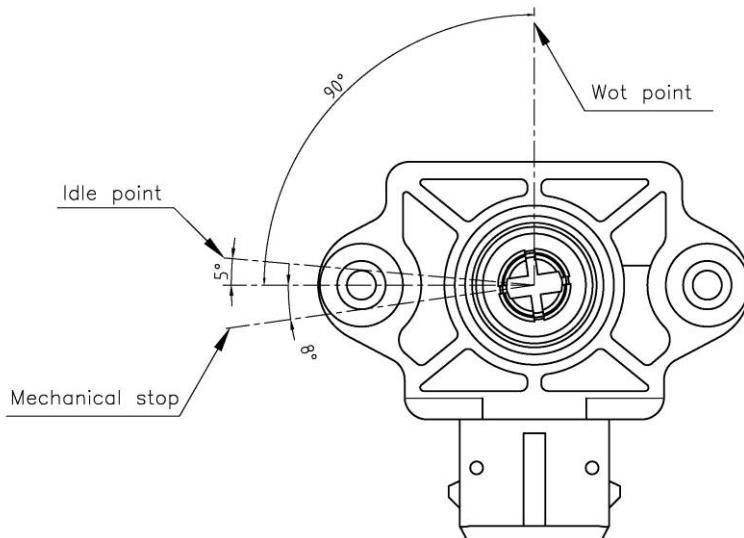
SI-514 Series

HEADQUARTER
Shirashian sanat co.
No.419, 10th St., 1st Blvd.,
Buali industrial estate
6518114334 Hamedan,
Iran
Tel/Fax: 0098 8114383212-13
Website: www.shirashianco.com
Email: info@shirashianco.com
Date: 04/23/2002
Revised: 12/20/2012
Version: 1.5



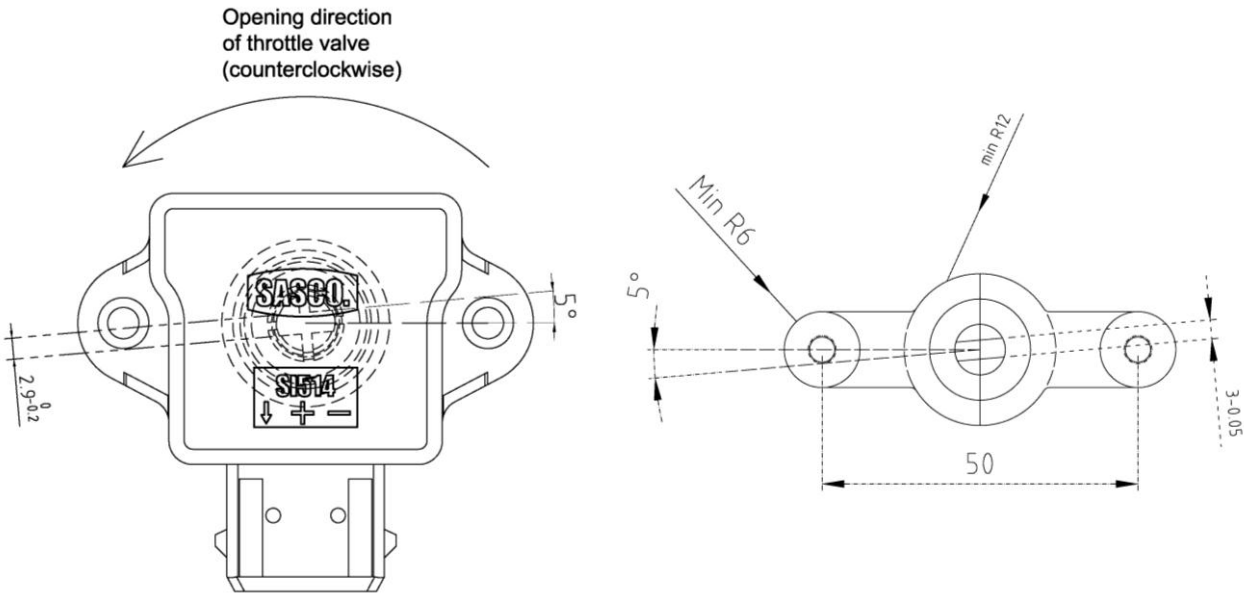
TPS in First Mechanical Stop

Note the viewpoint
 (this is a back viewpoint, attention to the connector)



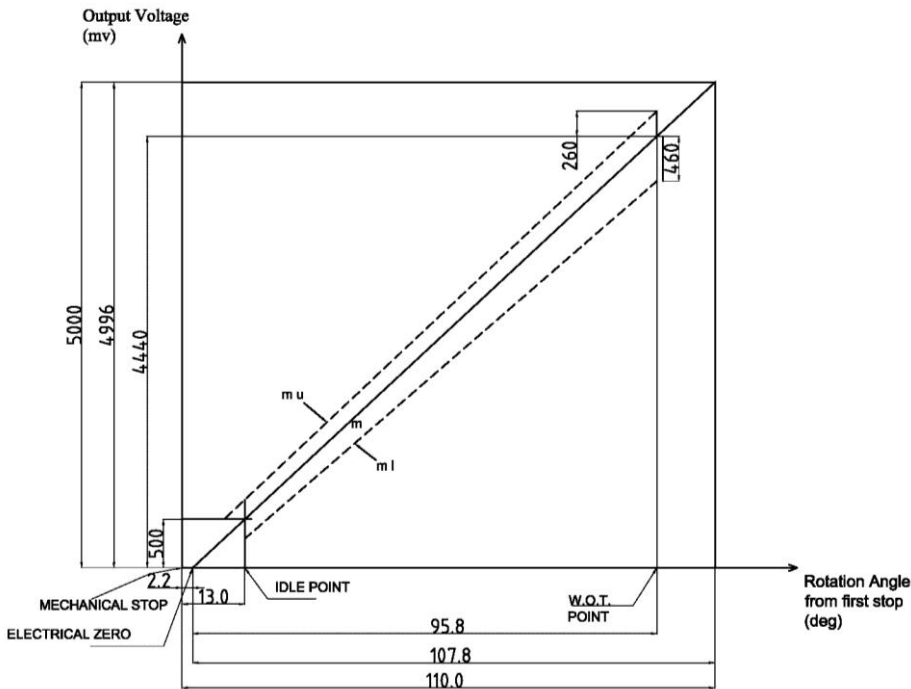
Throttle Shaft Drawn in Idle Position (5° from centerline)

Note the viewpoint
(this is a top viewpoint, attention to the connector)



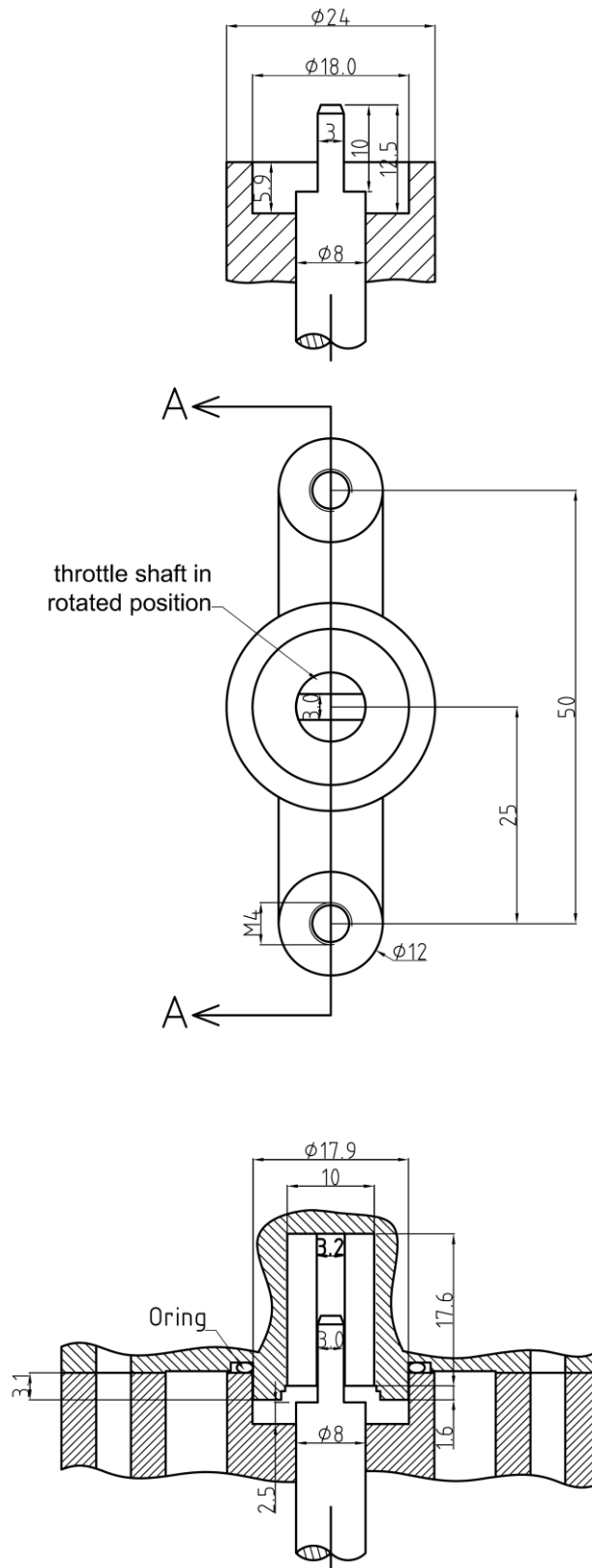
After installation on throttle, this TPS will behave exactly like its Voltage-Angle graph, if throttle shaft at idle position has angle of 5° compare to the throttle centerline. In addition, dimensions of throttle dimension should be same as attached drawing.

Electrical Characteristics



Throttle Shaft Drawn in 90° Rotated Position from centerline

section A-A



SI-514 Series

HEADQUARTER
 Shirashian sanat co.
 No.419, 10th St., 1st Blvd.,
 Buali industrial estate
 6518114334 Hamedan,
 Iran
 Tel/Fax: 0098 8114383212-13
 Website: www.shirashianco.com
 Email: info@shirashianco.com
 Date: 04/23/2002
 Revised: 12/20/2012
 Version: 1.5